

Mahidol University

SAWASDEE THAILAND

SUMMER PROGRAM

2024



SAWASDEE THAILAND

5

years

450+ participants

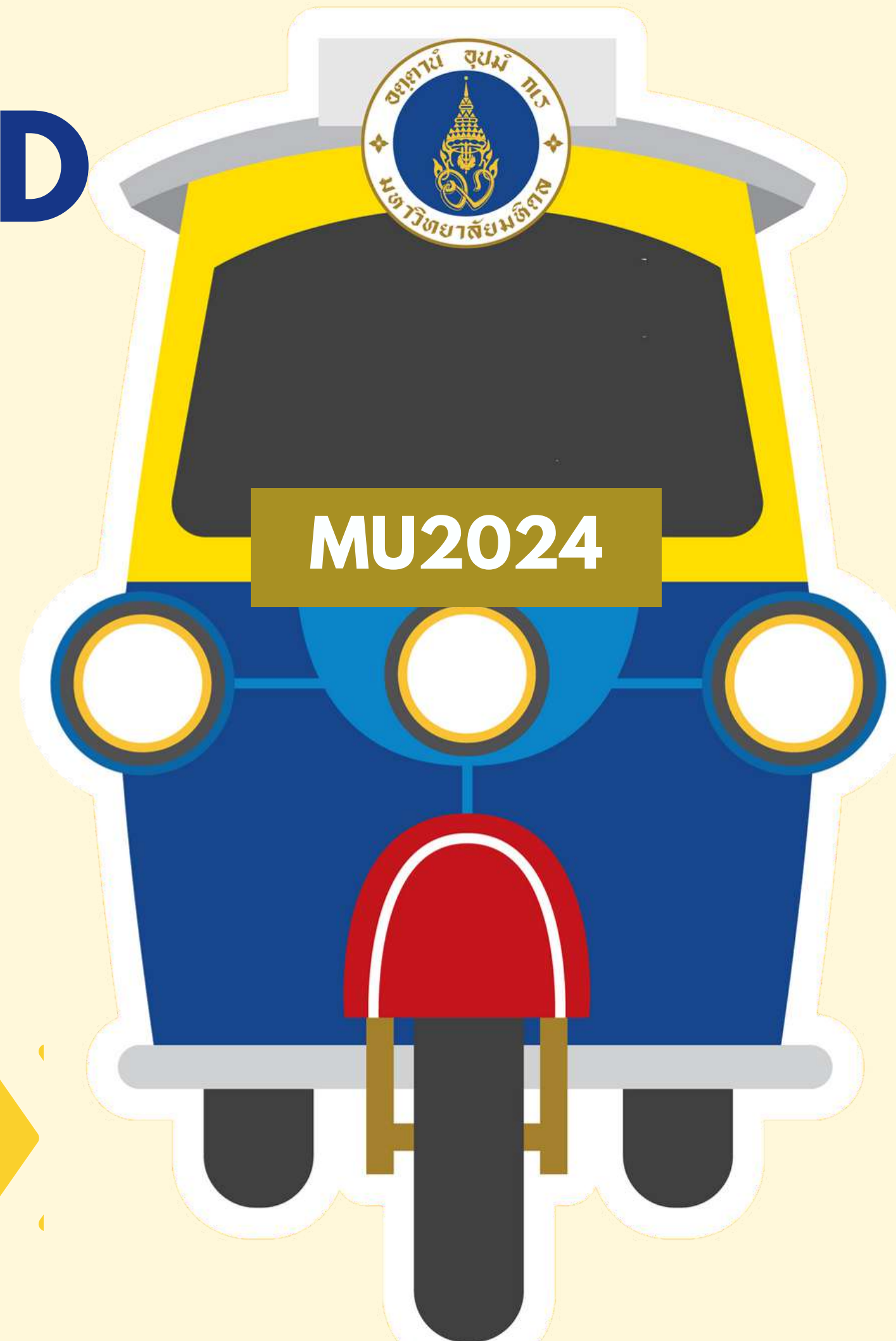
10+ countries

25+ Institutions



Boost up your skills.

Join the Global Classroom



Hello MU

- **A chance to learn from the best of both old and new:** Thailand's oldest higher education institution. Since our establishment in 1888 as Thailand's first medical college, we have expanded to offer a wide range of disciplines, covering advanced technology in health sciences, science and technology, and even music.
- **Ideal campus for living and learning:** A natural and evergreen environment. as the most eco-friendly University in Thailand, we care about energy-efficient usage, waste & water management, green open spaces, as well as cycling lanes, and a pedestrianized landscape.

- **Trips and cultural activities:** Experience Thai culture through Thai cooking class, Thai dancing class, Thai boxing, and more!
- **Strong support from the moment you arrive:** Don't worry about anything. We provide pick up & drop off service, student buddy system, on-campus facilities, and on-campus health service. Our staff and students are gracious hosts who will make you feel welcomed and comfortable.



we are

#1

in Thailand

Times Higher Education Asia University Rankings 2022
Times Higher Education World University Rankings 2022
UI Green Metric World University Ranking 2016-2021
US News Best Global Universities Rankings 2022
NTU World University Rankings 2022
CWTS Leiden Ranking 2022
Round University Rankings 2022



2 Batches

A

18 JUNE - 1 JULY 2024

with a 4day-3night study trip

➔ *Chang Island Study Trip (USD 1100)*

➔ *Chiang Mai Study Trip (USD 1250)*

➔ *Phuket Study Trip (USD 1400)*

B

27 AUGUST - 9 SEPTEMBER

USD 950 *with a 3day-2night study trip in
Petchburi & Prachuap Khiri Khan (West
coast area)*



Sawasdee Thailand Summer Program



Mahidol University
Wisdom of the Land



**SUSTAINABLE
LIFE & SOCIETY**

Objectives

01 

Good Health, Well-being, and Eco-lifestyles

This course aims to inspire you to discover new ideas to enjoy a happy and healthy lifestyle and to get things moving on the right track. As well as get you to know lifestyle eco-trends to answer the calls of global challenges and reach 17 SDGs. Evergreen happiness and the planet start with yourself.



02 

Better Planet & Sustainable Society

Let's share and bloom the sustainability! Understanding the sustainability challenges and how to beat them with case studies from Thailand's top companies and eco-conscious influencers will demonstrate how to tackle sustainability challenges and overcome them.



03 

Global Citizenship

Seed the concept of global citizenship together. This course aims to build friendships between you and your classmates from the world's top universities.





COURSE LIST



- INTRODUCTION TO THAILAND
 - INTRODUCTION TO THAI CULTURE
 - INTRODUCTION TO THAI FOOD AND LOCAL DISHES
 - INTRODUCTION TO SUSTAINABILITY
 - HEART - HEALTH - BODY - MIND
 - LIMITS, ALTERNATIVES, AND CHOICES
 - FUTURE-LIVING SKILL
 - GREEN CHOICES: GUIDES TO ECO-LIFESTYLE
 - ECO-TOURISM MANAGEMENT
 - BUSINESS MANAGEMENT TOWARDS THE SUSTAINABLE DEVELOPMENT GOALS
 - URBAN DESIGN MANAGEMENT
- 

Sawasdee Thailand Summer Program

CULTURE



Mahidol University
Wisdom of the Land



Objectives



01

Learning

This course aims to inspire you to discover Thailand and its people with insight and in-depth information.



02



Doing

Not only lectures, but this course will provide cultural workshop and unforgettable moments to exchange your culture with MU students and your classmates.



03



Engaging

Plant the concept of global citizenship together. This course aims to build friendships between you and your classmates from the world's top universities.





COURSE LIST

- **INTRODUCTION TO THAILAND AND THAI CULTURE**
 - **EVERYDAY THAI LANGUAGE SKILLS**
 - **INTRODUCTION TO THAI FOOD**
 - **CHARACTERISTICS OF THAI PEOPLE**
 - **MULTICULTURAL SOCIETY**
- **THAI HERBS AND TRADITIONAL MEDICAL WISDOMS**
- **URBAN CULTURE AND DIGITAL CULTURE IN THAILAND**
 - **CULTURE-BASED BUSINESS MANAGEMENT**
 - **SUPERSTITION AND FOLKLORE OF THAI PEOPLE**

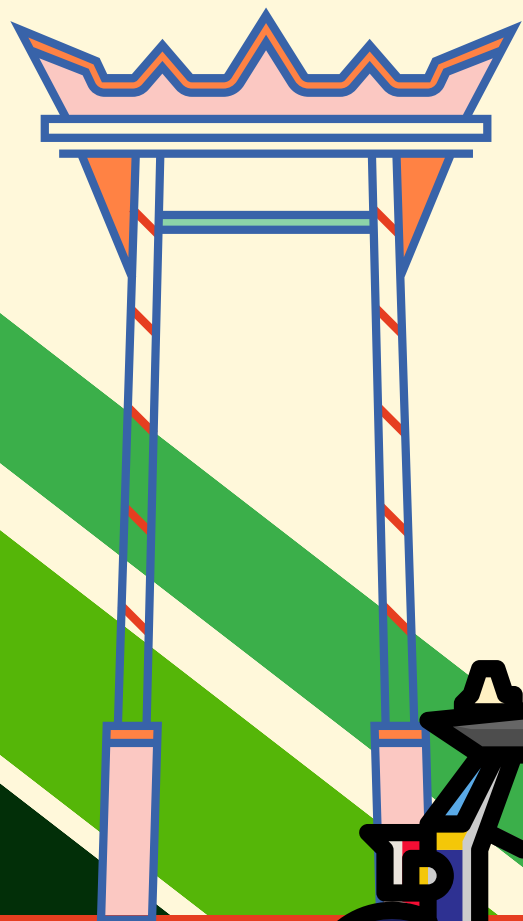
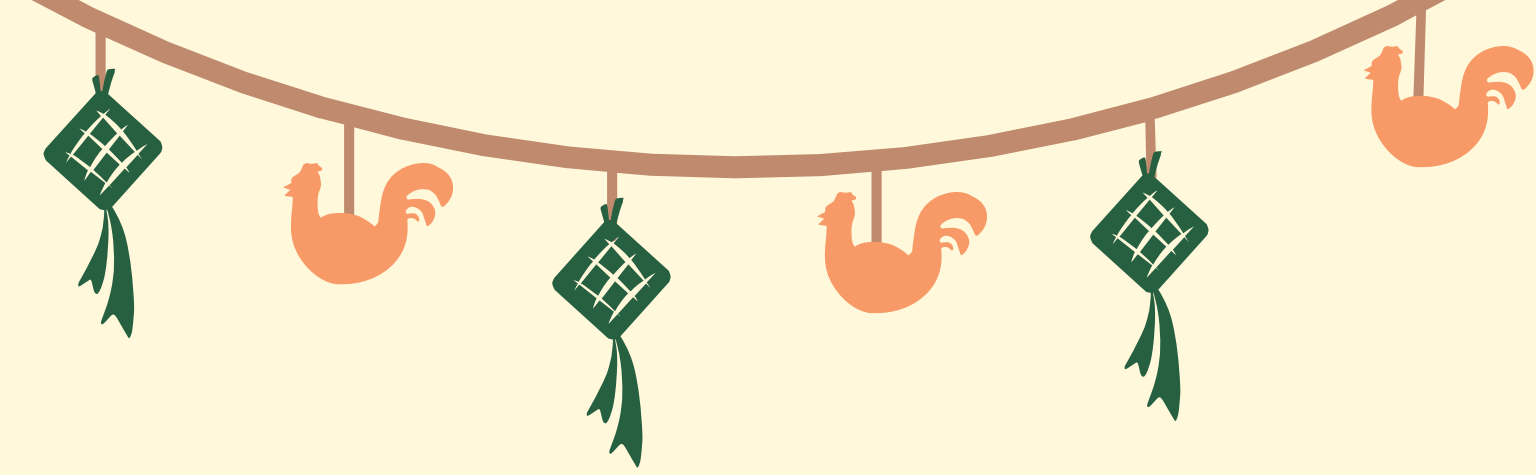


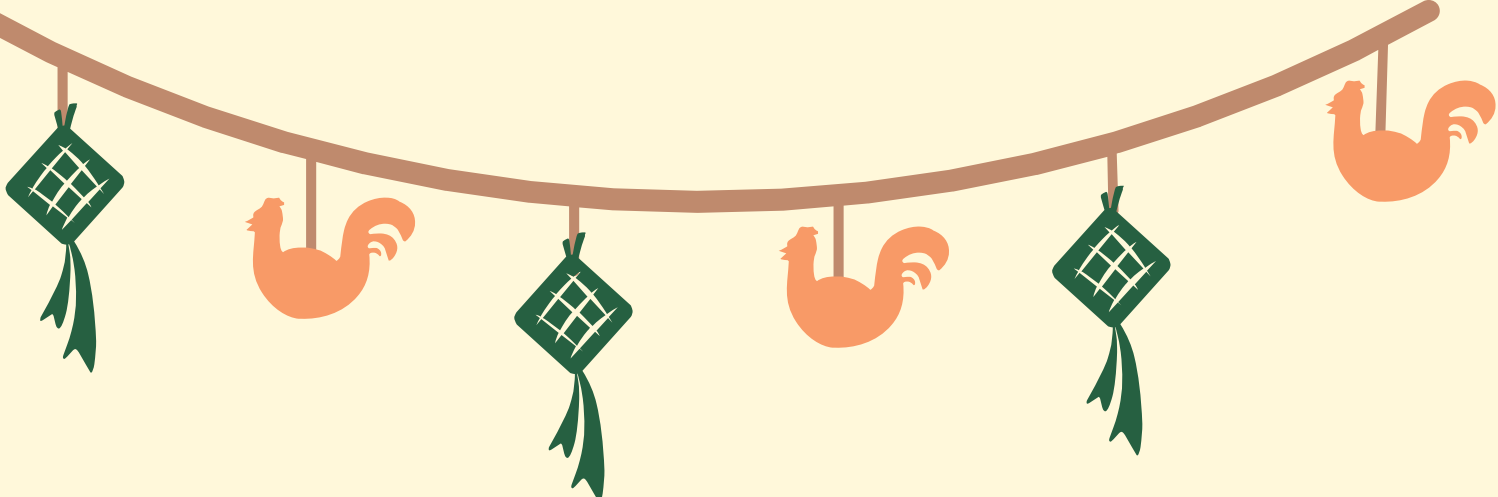
EXTRA CURRICULAR ACTIVITIES

- THAI BOXING
- THAI DANCING
- THAI COOKING

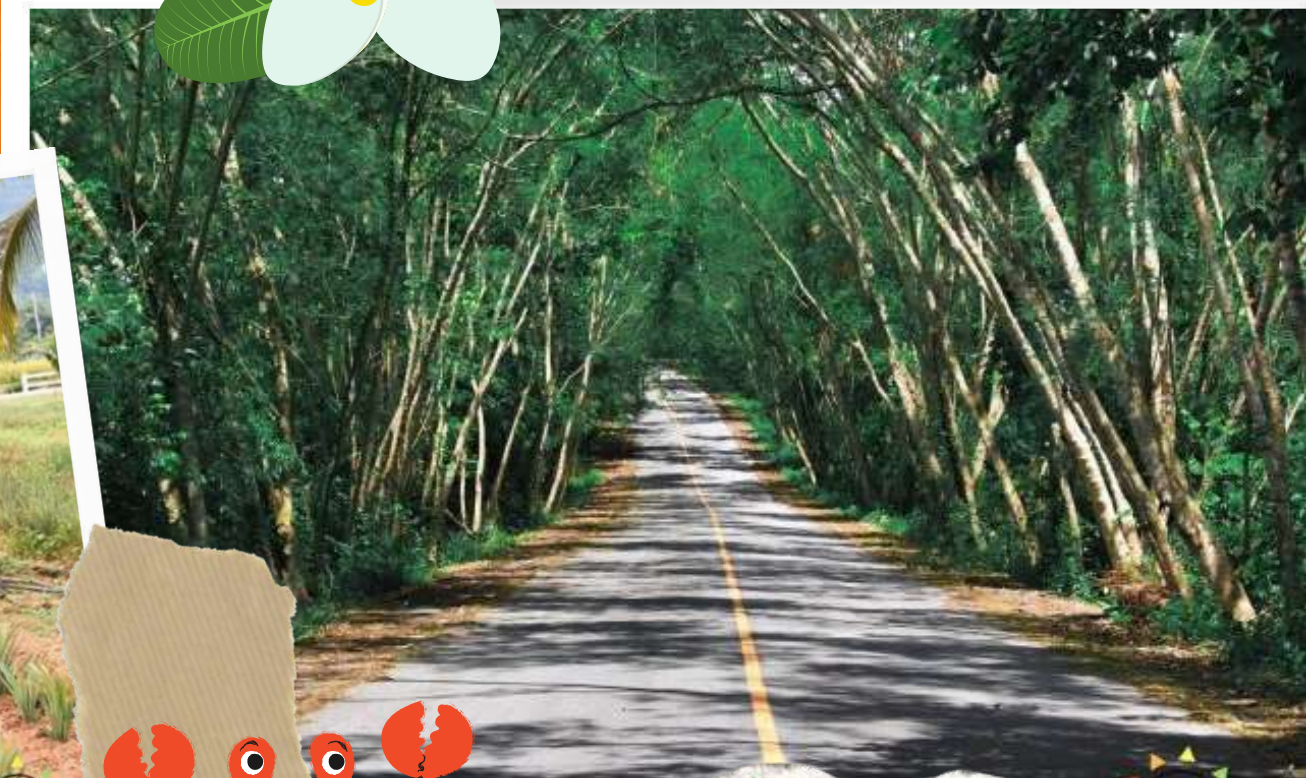
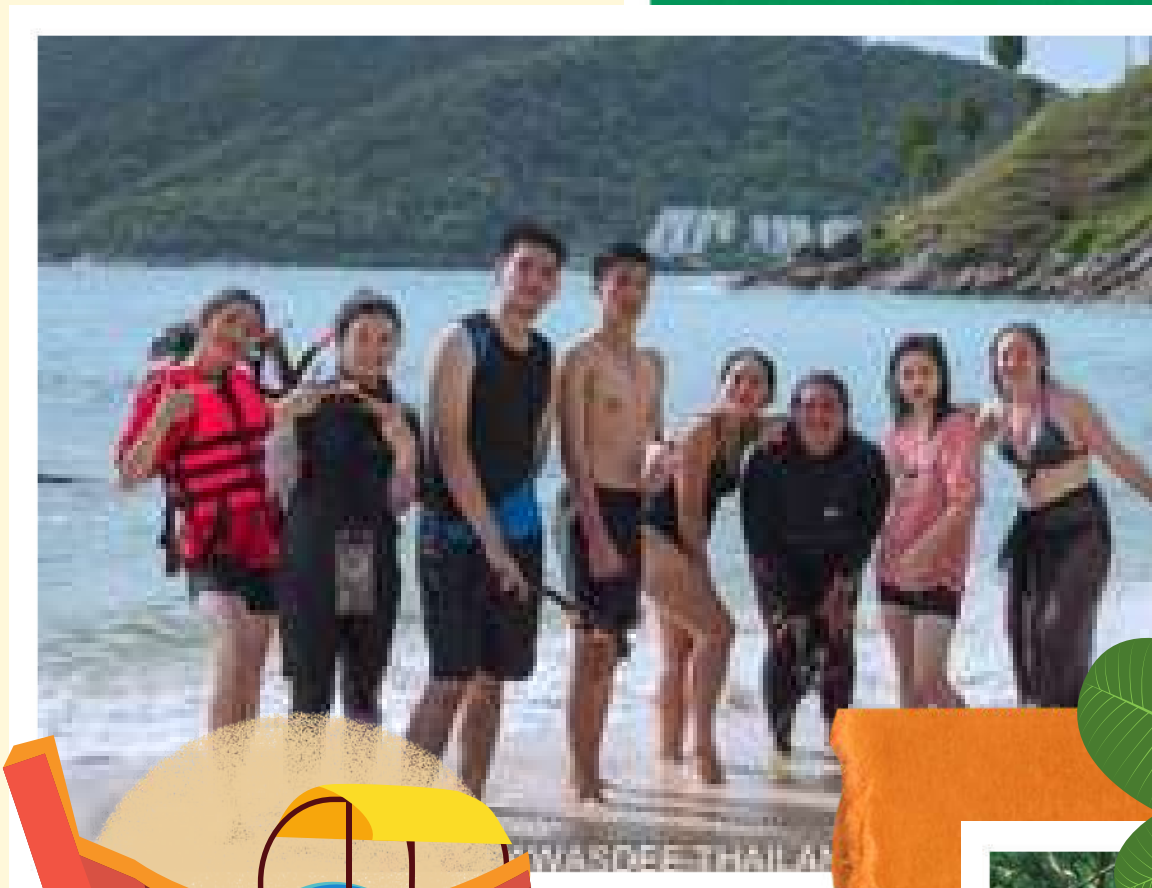


Field trips to Bangkok





A study trips to sustainable learning areas



Student Life



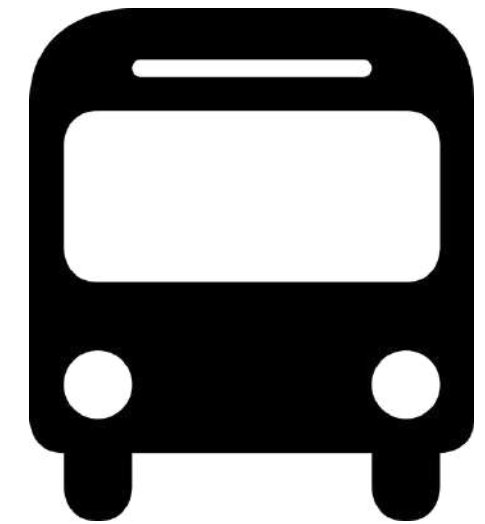
Accommodation



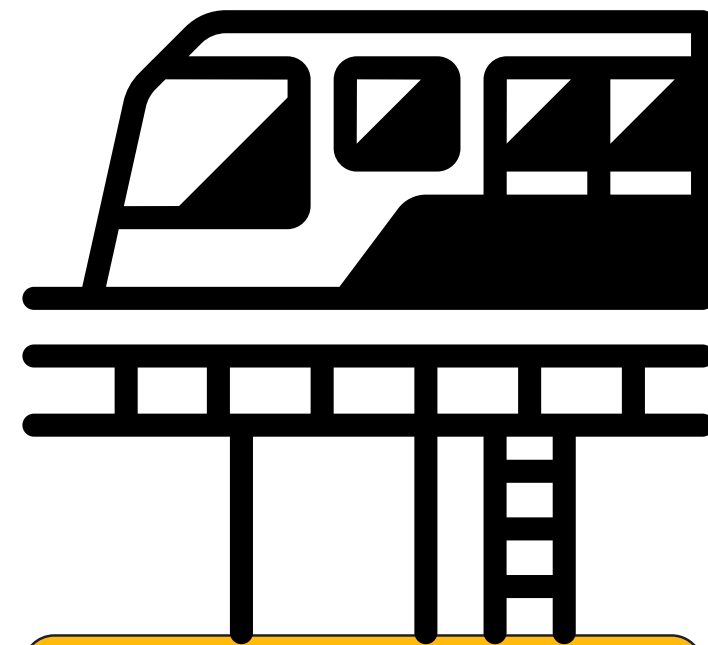
Transportation



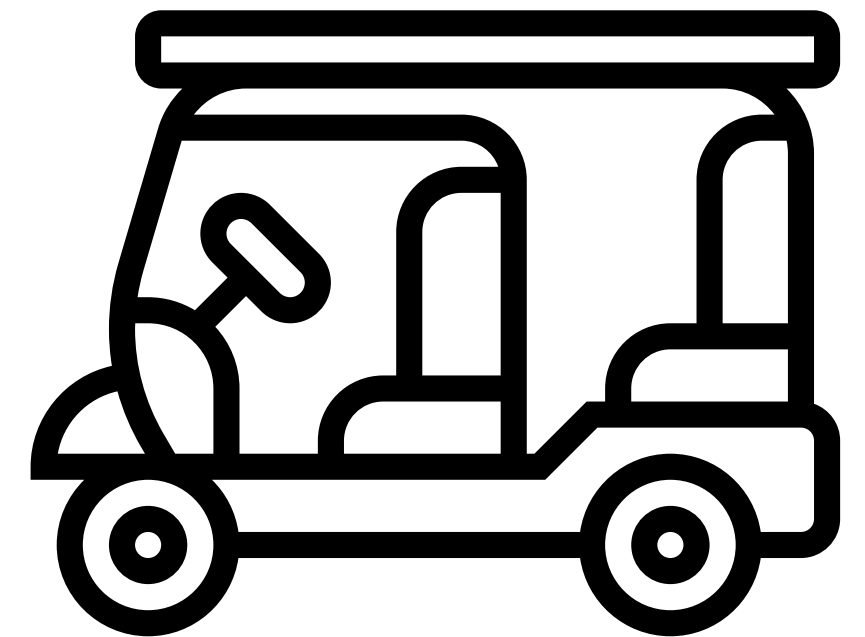
start at 1.2 USD



start at 0.5 USD



start at 1.5 USD



start at 1.5 USD

Food at campus

start at 1.5 USD



Food around campus

start at 1.5 USD



start at 9 USD



start at 1.5 USD



Festivals



Cultural Exchange



SDGs



Global opportunities

H-I-D-E-F soft skills

Health Literacy

Internationalization

Digital Literacy

Environmental Literacy

Financial Literacy



Monthly Activity

Program Fee

BATCH A

Chang Island Study Trip (USD 1100)
Chiang Mai Study Trip (USD 1250)
Phuket Study Trip (USD 1400)

BATCH B

950 USD



Airport pick-up & drop-off
Extracurricular activities
Study trips
On-campus Wi-Fi
Welcome lunch and farewell lunch



International air tickets
International Insurance

Accommodation Fee*

250 USD

(shared room for 2-4)

550 USD

(Single room)

**Students from partner universities can apply for accommodation scholarship at USD 250 max. The scholarships are limited.*



sawasdee.mahidol@gmail.com