

The degree programm consists of 120 Credit Points (CP) in total:

Specialised Science:	50 CP	■
Subject-Related Didactics:	10 CP	■
Elective Subject Area - Vocational Field of Studies:	20 CP	■
Educational and Social Science :	25 CP	■
Research/Thesis:	15 CP	■

Language of Tuition:
GERMAN
certificates required

The following **module overview** is an abbreviated, easy-to-read version of the **official course schedule** in the examination regulations, to be found in the Satzungsbeilagen of TU Darmstadt:

1 st semester	2 nd semester	3 rd semester	4 th semester
Introductory Proseminar (5 CP)	Logic and Argumentation (5 CP)	Elective Subject Area <i>3 Modules of one's own choice</i> (15 CP)	
Theoretical Philosophy I (5 CP)	Reflection on Normative Orders (5 CP)		Research and Reflection: Theoretical Philosophy (5 CP)
	Practical Philosophy I (5 CP)		Research and Reflection: Practical Philosophy (5 CP)
	Philosophy in Class I (5 CP)	Philosophy in Class II (5 CP)	Master's Thesis (15 CP)
Educational and Social Science (25 CP)			
Elective Subject Area (Specialised Science and Didactics) (20 CP) (1 out of 7): Building Technology or Chemical Engineering or Printing and Media Technology or Electrical Engineering and Information Technology or Computer Science or Body Care or Metal Engineering			

Study Programmes
www.tu-darmstadt.de/studieren

Online Self-Assessment
www.self-assessment.tu-darmstadt.de

Course Schedule
www.tucan.tu-darmstadt.de

Application and Admission for International Students
(International Office)
www.tu-darmstadt.de/international

Centre for Teacher Education
www.zfl.tu-darmstadt.de

Zentrale Studienberatung und -orientierung ZSB
(Central Student Advisory and Orientation Office)

Karolinenplatz 5, 64289 Darmstadt
Gebäude S1 | 01
E-Mail: info@zsb.tu-darmstadt.de

Opening hours: www.zsb.tu-darmstadt.de

Imprint

Publisher President of TU Darmstadt
Editorial office Zentrale Studienberatung und
-orientierung ZSB

Please fold here

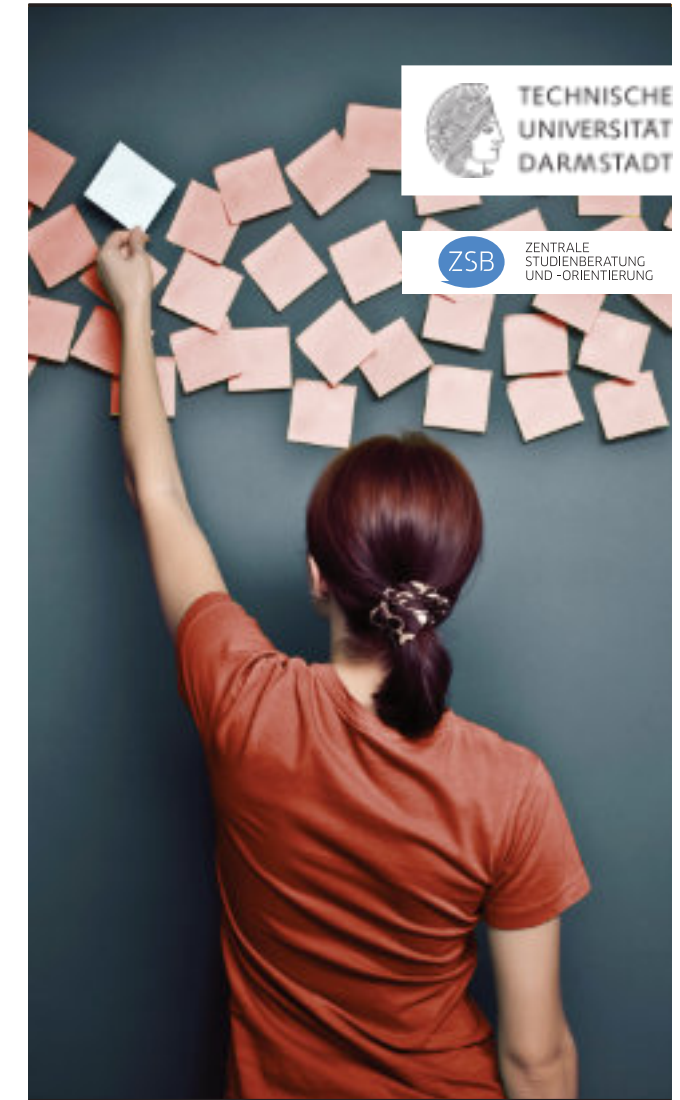
www.tu-darmstadt.de/international

For information on application deadlines please refer to

Admission

Ethik Master of Education

Ethics (M.Ed.)



Design: DUBBEL SPÄTH, Darmstadt | Titelfoto: Gregor Schuster, Darmstadt

www.gugw.tu-darmstadt.de

www.zfl.tu-darmstadt.de

The programme Teaching at Vocational Schools at TU Darmstadt consists of two connected study programmes:
• first, the Bachelor of Education programme;
(6 semesters: vocational field of study) and
• Subsequently, the Master of Education programme
(4 semesters; subject of general education/ subject studies).
Only the completion of both the Bachelor of Education AND the Master of Education is equivalent to the first state examination in the state of Hessen and therefore mandatory for the admission to the preparatory period (teaching practice) or the teaching profession.

Brief Description