

Ecology and Biodiversity (M.Sc.) - Effective 01 June 2026

The degree programme consists of 120 Credit Points in total:

Compulsory Area:	37 CP	
Elective Area:	48 CP	
Compulsory Area Interdisciplinary Courses	5 CP	
Thesis:	30 CP	

Language of tuition:
ENGLISH
certificates required

The following **module overview** is an abbreviated, easy-to-read version of the official course schedule in the examination regulations, to be found in the Satzungsbeilagen of TU Darmstadt:

1 st Semester	2 nd Semester	3 rd Semester	4 th Semester
General Introduction: Getting Started in M.Sc. Ecology and Biodiversity (4 CP)			Master Thesis (30 CP)
General Introduction: Organisms (4 CP)	General Introduction: Ecosystems (4 CP)	Research Internship / Scientific Writing (17 + 2 CP)	
Study Design and Data Analysis (6 CP)		Interdisciplinary Courses: General Catalogue of TU Darmstadt (5 CP)	
Elective Modules Master of Ecology and Biodiversity (min. 24, max. 48 CP)			
Elective Modules Political Science and Geosciences (min. 0, max. 24 CP)			
Elective Modules Biological Specialisation and Interdisciplinary Courses (min. 0, max. 12 CP)			

Study Programmes

www.tu-darmstadt.de/studieren

Online Self-Assessment

www.self-assessment.tu-darmstadt.de

Course Schedule

www.tucan.tu-darmstadt.de

Application and admission for international students
(International Office)

www.tu-darmstadt.de/application

Zentrale Studienberatung und -orientierung ZSB
(Central Student Advisory and Orientation Office)

Karolinenplatz 5

64289 Darmstadt

Building S1 | 01

email info@zsb.tu-darmstadt.de

Opening hours: www.zsb.tu-darmstadt.de

Imprint

Publisher

President of TU Darmstadt

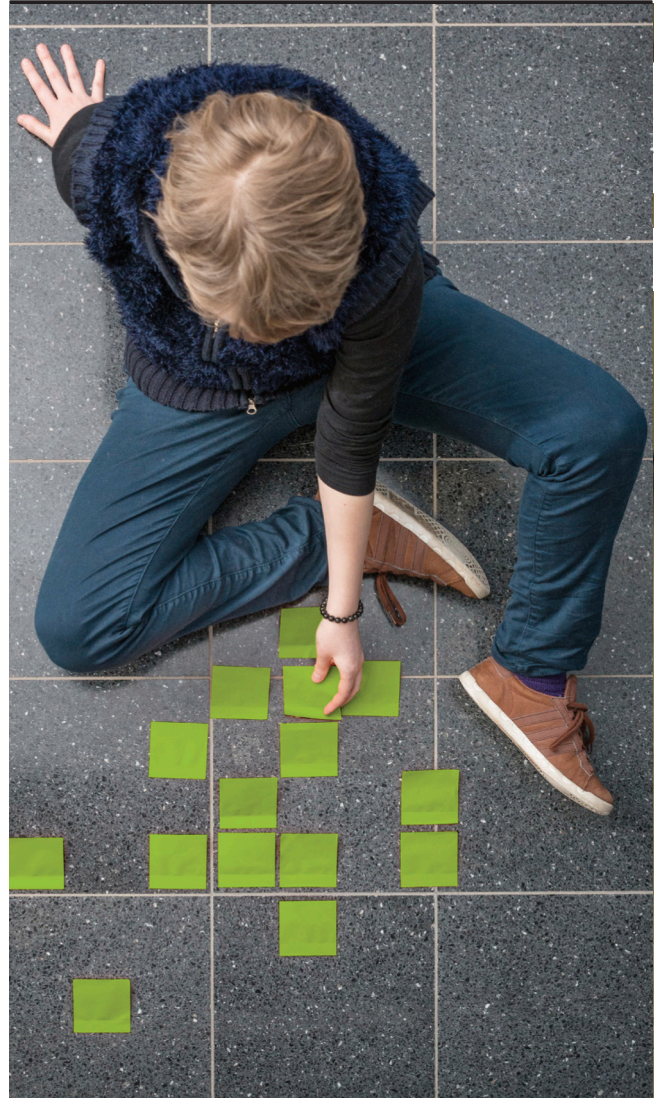
Editorial office

Zentrale Studienberatung und

-orientierung ZSB

Please fold here

Ecology and Biodiversity Master of Science



Design: DUBBEL SPÄTH, Darmstadt | Teilfoto: Gregor Schuster, Darmstadt

The Department of Biology of TU Darmstadt explores a broad spectrum of current research questions in the life sciences, including cell and molecular biology, microbiology, ecology and bioinformatics. Our research is shaped by dedicated networking with the technical and natural science faculties of the TU Darmstadt as well as with national and international research institutions. The Botanical Garden Campus is a forum for exchange between researchers, lecturers and students – for a shared view of the bioscientific challenges of the future.

A focus on modern life sciences

Brief Description

www.tu-darmstadt.de/application

Formal and language application requirements for applicants with international qualifications:

Application

www.bio.tu-darmstadt.de